



Date: May 2015
Subject: Conversion of RPL 5" Slip Part Numbers to 3.5"
Models: RPL25HD drivelines

Dear Customer,

Meritor Australia has changed back to RPL 3.5" slip for production from October 2014 to Kenworth. As a result of this change, Meritor Australia will not be supplying RPL 5" slip to Kenworth unless specifically requested.

Aftermarket Support

The method used in the example below can be used to determine the equivalent 3.5" slip assembly to replace an existing 5" slip assembly in service

Example: A 3.5" slip assembly replacement is required for an existing 5" slip assembly, part number 25RHS044C535H

Calculation 1:

To determine the collapsed Length (A) for 25RHS044C535H (Ref FIG 1)

$$\begin{aligned} A &= T + 17.9" \\ &= 53.5" + 17.9" \\ &= 71.4" \end{aligned}$$

Calculation 2:

To determine the Tube Length (T) required for the 3.5" driveline assembly based on the collapsed length of 25RHS044C535H (Ref FIG 2)

$$\begin{aligned} T &= A - 16.4" \\ \text{From calculation 1, } A &= 71.4" \\ T &= 71.4" - 16.4" \\ &= 55" \end{aligned}$$

Selecting the Equivalent 3.5" Part Number

The RPL 3.5" Slip Assembly part numbers are generally available at every 0.2" tube length. As per the calculation method the required part number is 25RHS044C550H and this part number is available, if it is not available then select the nearest available part number.

The replacement part number for 25RHS044C535H is 25RHS022C550H.



RPL 5" Slip Assembly Base Family

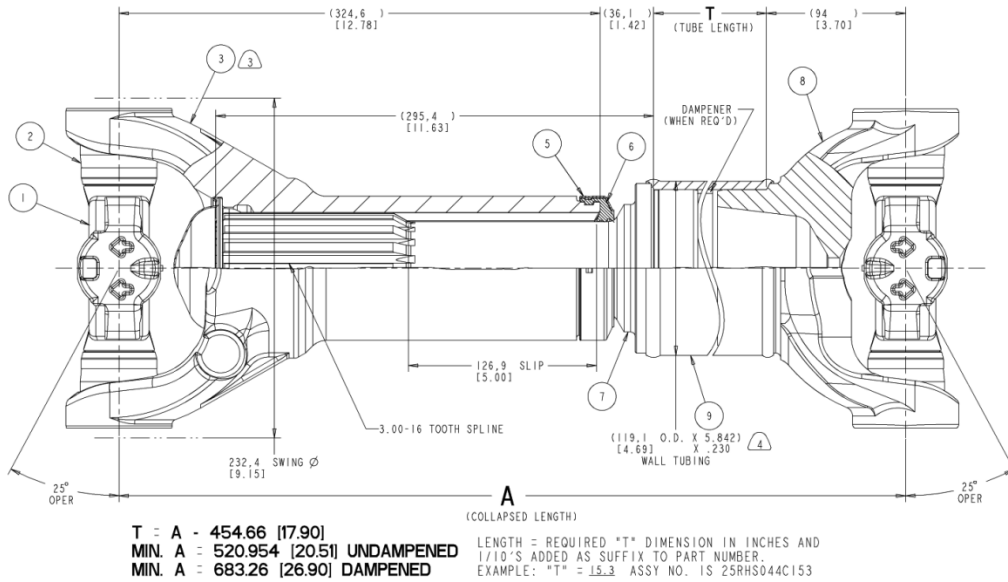


FIG 1

RPL 3.5" Slip Assembly Base Family

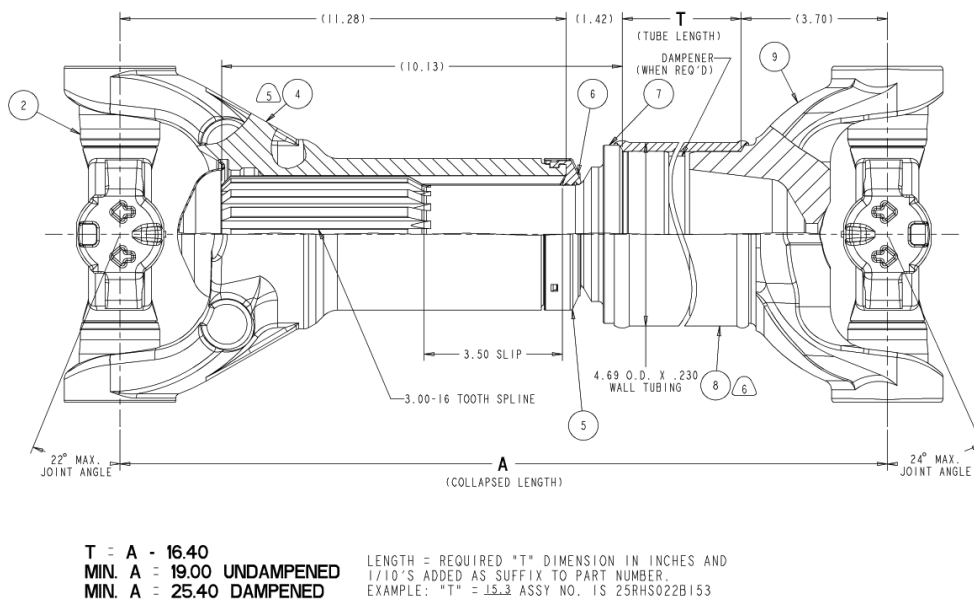


FIG 2