

Meritor Core Destruction Authorisation


As part of the Genuine Meritor Carrier Program, we have reviewed and revised the formerly named “MRCA - Meritor Remanufactured Carrier Authorisation” process. The result is a simpler, more rewarding process for OEM selling dealers.

From 1st July 2015, OEM selling dealers will be required to conform to the process outlined below. OEM selling dealers will no longer be required to return cores to Meritor and can now keep the scrap value for them. Failure to provide evidence of core scrapping/customer keeping core or completing submission to an acceptable standard may result in a core charge of \$1500 + GST per core.

Meritor will accept return cores from Melbourne Metro OEM selling dealers only and will not be liable for any delivery/transport charges.

Why purchase Genuine Meritor Carriers?

When the time comes to replace your carrier, there are 3 main reasons to buy a Genuine Meritor Carrier:

	Meritor	Remanufactured
Quality  IDEAS DRIVING RESULTS	Genuine Meritor Carriers are purchased directly from the US (facility which manufactures OE axles) and come complete with the latest design updates AND are assembled from new Meritor components.	Carriers are generally purchased from local dealers, cleaned up, repainted and are assembled with Aftermarket quality components, often from different suppliers and quality levels.
Warranty	12 month unlimited kilometres.	6 month unlimited kilometres.
Coverage	Australia wide coverage through OE dealer network.	Usually limited to local coverage

GENUINE OE QUALITY.
GENUINE PEACE OF MIND.

Brand new.... NOT remanufactured.

Is it time to replace your current carrier? Replace it now with a brand new, genuine Meritor carrier, complete with the latest design updates AND assembled from new Meritor components.

For more information on genuine Meritor carriers visit www.meritorpartsonline.com, speak with your local OE dealer or call Meritor Customer Service on 03 8353 6050.



Expectations from OE Selling Dealers

The only requirement for OE Selling Dealers is to complete the process section outlined below. Failure to provide evidence of core scrapping/customer keeping core or completing submission to an acceptable standard may result in a core charge of \$1500 + GST per core.

Why Meritor Core Destruction?

Short Term Gain = Long Term Pain

Although your business may receive an initial payment for selling cores to remanufacturers, you are essentially keeping them in business - providing alternative suppliers to your own customer base.

Money In Your Pocket

There is money in scrapping dead cores (once authorisation has taken place) and it also avoids any corresponding core charges (\$1500 + GST) per core.

Process

1. Complete Meritor Core Destruction Authorisation form (see sample on page 3)
2. Write GMC (Genuine Meritor Carrier - formerly MRCA) number (found on GMC card supplied with every Genuine Meritor Carrier) in white marker onto an undamaged surface of the displaced carrier and take photo, clearly showing complete unit and GMC number (see sample on page 5 - before photo)
3. Ensure core housing and crown wheel are damaged by appropriate means eg. oxy torch or angle grinder.
4. Take photo of complete unit and GMC number clearly demonstrating damage (see sample on page 5 - after photo)
5. Email completed submission (form and photos) to coresAUS@meritor.com or fax to (03) 8353 6060.
6. You will receive an email from Meritor confirming authorisation has been completed.
7. Scrap core.

GENUINE OE QUALITY.
GENUINE PEACE OF MIND.

Brand new.... NOT remanufactured.

Is it time to replace your current carrier? Replace it now with a brand new, genuine Meritor carrier, complete with the latest design updates AND assembled from new Meritor components.

For more information on genuine Meritor carriers visit www.meritorpartsonline.com, speak with your local OE dealer or call Meritor Customer Service on 03 8353 6050.





Meritor Heavy Vehicle Systems Australia Ltd
ABN 86 004 479 430
50 Calarco Drive DERRIMUT VIC 3030
Phone: (03) 8353 6050 (Parts Direct)
(03) 8353 6000 (Office)
(03) 8353 6060 (Fax)

G.M.C.: 15000
Model: RP23/160
Ratio: 4.10

MERITOR CORE DESTRUCTION AUTHORISATION

DEALERSHIP Sample Dealer **DEALER CODE** 12345
ADDRESS 123 Sample Road
CITY Samletown **STATE** VIC **POSTCODE** 1234
PHONE NUMBER (03) 1234 5678 **FAX NUMBER** (03) 1234 5679

STEP 1:

Form must be filled out completely before submission to Meritor. Failure to submit correctly will result in submission not being accepted for authorisation. **Meritor reserves the right to enforce \$1,500 carrier charge for incomplete submissions.**

Email completed submissions (inc. photos) to coresAUS@meritor.com or fax to (03) 8353 6060.

STEP 2:

Is dealer in possession of return core?

☒ Yes ☐ No

(If you answered "Yes" to Step 2 follow Step 4)

STEP 3:

If your answer is "No" to Step 2 an additional charge of \$1,500 for each carrier will be charged by Meritor.

STEP 4:

Is this a warranty?

☐ Yes ☒ No

If yes, do not scrap core. Contact Meritor Field Operations Group for further instructions.

STEP 5:

Cores are no longer required to be returned to Meritor. Please send through photos with this submission of the following to complete the authorisation:

- ☐ Before photo – including GMC number
- ☐ After photo – including GMC number and damage to housing and crown wheel.

GMC = GENUINE MERITOR CARRIER
(formerly referred to as MRCA (Meritor Remanufactured Core Advice))

Document: FM021

Issue: H

Date: Oct 2014

new
genuine
Meritor Carrier Program

GMC #: 15000

← **SEE OVER FOR CHECKLIST** →



FRONT

new
genuine
Meritor Carrier Program

BACK

CHECKLIST

**BEFORE OPERATING THIS VEHICLE,
HAVE YOU REMEMBERED TO:**

- ☐ 1. COMPLETELY CLEAN THE INSIDE OF THE AXLE HOUSING CAVITY? Check and clean wheel end equipment for any metal debris etc. Check output shaft assembly and bearings for any metal debris.
- ☐ 2. CHECK THE FORWARD AND REAR AXLE RATIOS? DO THEY MATCH?
- ☐ 3. TIGHTEN YOKE/FLANGE NUTS AND ALL FASTENERS TO THE CORRECT TORQUE VALUES? Check for any endplay within the pinion bearings at the yoke/flange area on the rear carrier of a tandem or on the yoke/flange area on a single drive axle carrier. Refer to Maintenance Manual.
- ☐ 4. FILL THE AXLE WITH THE CORRECT AMOUNT AND TYPE OF LUBRICANT? Refer to Maintenance Manual.
- ☐ 5. IF DODL CARRIER IS FITTED, IS THE MANUAL LOCK BOLT REMOVED FROM CYLINDER AND STOWED IN PROPER POSITION? Refer to Maintenance Manual.
- ☐ 6. FOLLOW THE 5KM/40KPH BREAK-IN PROCEDURE? Road test vehicle in an unloaded condition. Recheck lubricant levels, fasteners and for any oil leakages after completing initial break-in.
- ☐ 7. DRAIN AND REPLACE OIL (ALSO OIL FILTER) AT INITIAL 5000 KMS OF OPERATION.

**IF PROCEDURES ARE NOT FOLLOWED CORRECTLY,
EARLY FAILURE OF THE CARRIER MAY OCCUR
AND COULD VOID YOUR WARRANTY.**

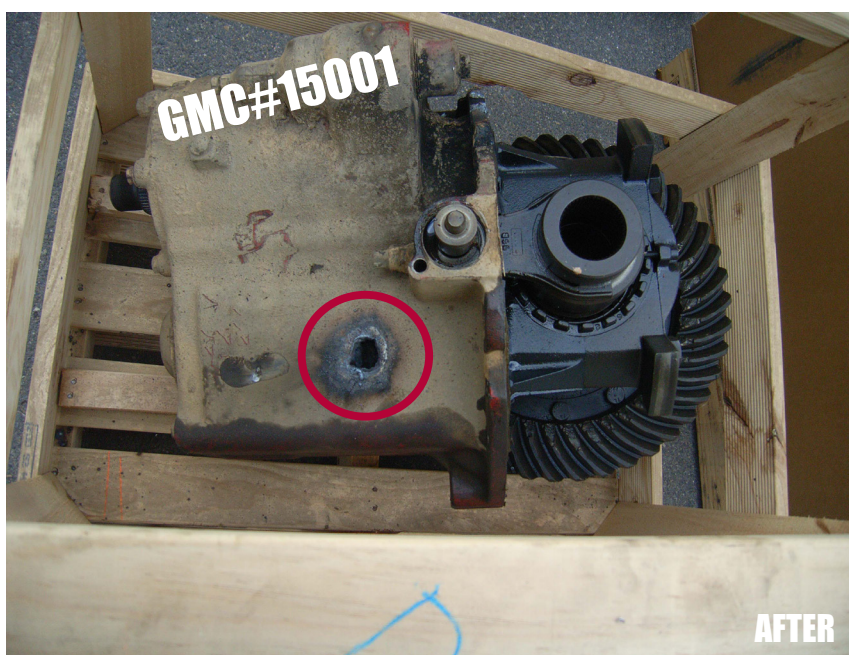
FOR ADDITIONAL INFORMATION ON MERITOR CARRIERS, CONTACT:

MERITOR
50 CALARCO DRIVE, DERRIMUT, VICTORIA 3030
PH: 03 8353 6050 FAX: 03 8353 6060
MAINTENANCE MANUALS ARE AVAILABLE FOR DOWNLOAD FROM:
www.meritor.com/LOD





Example 1



Example 2